

SUMITOMO



**SUMITOMO CONSTRUCTION
MACHINERY CO., LTD.**

731-1 Naganumahara-cho, Inage-ku, Chiba, 263-0001 Japan
For further information please contact: Phone : +81-43-420-1829 Facsimile : +81-43-420-1907

We are constantly improving our products and therefore reserve the right to change designs and specifications without notice.
Illustrations may include optional equipment and accessories and may not include all standard equipment.

SUMITOMO

FOREST MACHINES



LF-6 SERIES
40 SERIES



SUMITOMO FOREST MACHINES

Tough, Durable and Reliable for the work you do.





LF-6 SERIES

SH210LF-6 SH250LF-6 SH300LF-6

Utility models for forestry work

Forestry work requires a lot of jobs such as road building, felling, harvesting, processing and handling. LF dash 6 series is designed based on general construction model and known as utility model to meet various types of forestry jobs. This dash 6 series cover 21 tons, 25 tons and 30 tons which are most popular ranges in New Zealand forestry sector.

SIH:S+ hydraulics technology

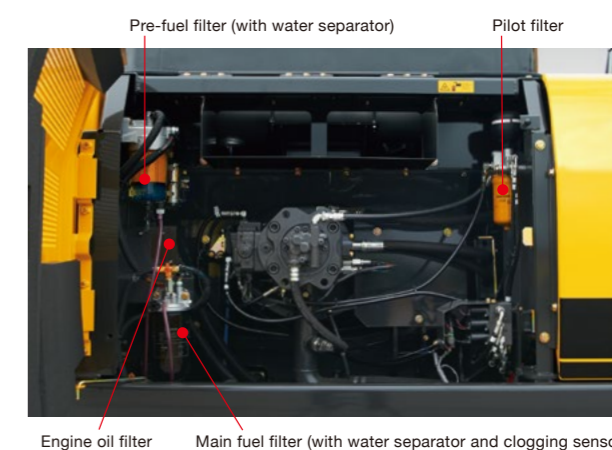
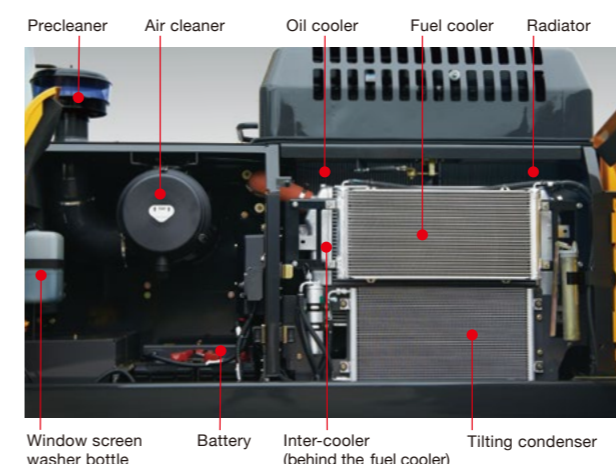
Sumitomo unique hydraulics system "SIH:S+" delivers fine controllability and further fuel efficiency. Original technology Spool Stroke Control (SSC), perfectly matches the engine and hydraulic power, and further improves the operational speed whilst maintaining smooth control of the machine subject to the working condition.

SPACE 5+ engine technology

SPACE 5+ engine technology optimizes fuel efficiency and excellent performance via the common rail fuel injection system, cooled EGR system, and turbocharger.

Minimal maintenance

Cleaning of the dust-proof net is simplified and a fuel prefilter to the main fuel filter is provided as standard equipment to reduce trouble. In addition, the fuel and oil filters are installed at easy-to-access location to facilitate replacement.



High and wide undercarriage

Purpose-built high and wide undercarriage offers you high ground clearance for travelling over stumps and lower ground pressure which is good for soggy area. The structure has been improved with sturdy x-pattern carbody, full-length track guards (2 pieces, bolt-on type), sealed and strutted track chain, sealed rollers and idlers, idler mount with reinforcement, two-speed independent hydrostatic travel motors and their covers. New step and scraper are designed for easier cleaning.



Utility arm and HL boom

In severe forestry working condition, well designed heavy duty arm and high-lift (HL) boom makes working range expand upward and you can reach attachment higher and gain advantages with shorter front turning radius.





40 SERIES

3240TLN 3740TLW 4040TLW 4640TLW 5040TLW

Purpose-built models for forestry work

Keeping best-in-class fuel efficiency as it is, new 40 series of timber loader full spec is finally unveiled. Sumitomo customer-oriented approach enable high productivity and machine reliability as well. You could have faster attachment speed, larger lifting capacity with fine controllability, powerful swing torque and drawbar pull which are necessary for forestry work with 40 series.

SIH:S α hydraulics technology

Improved hydraulics system "SIH:S α" provides you both greater fuel economy and faster cycle time. Brand new circuits with optimized flow thanks to electric hydraulic control sensors, full electric controlled pump, 6-stack proportional solenoid valve and enhanced SSC technology. You also receive benefits from dedicated new control valve which is dedicated and tuned for timber loading performance.

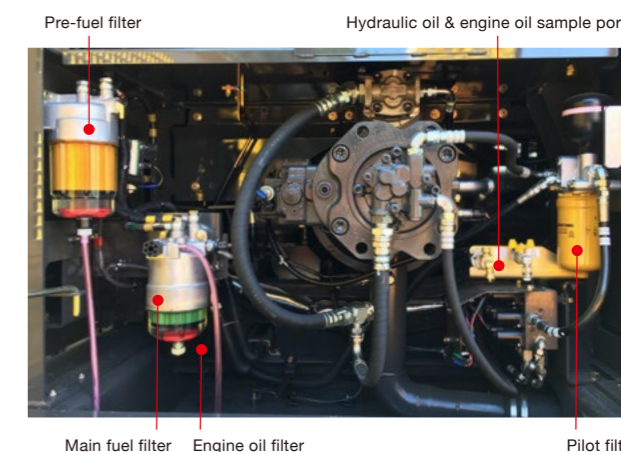
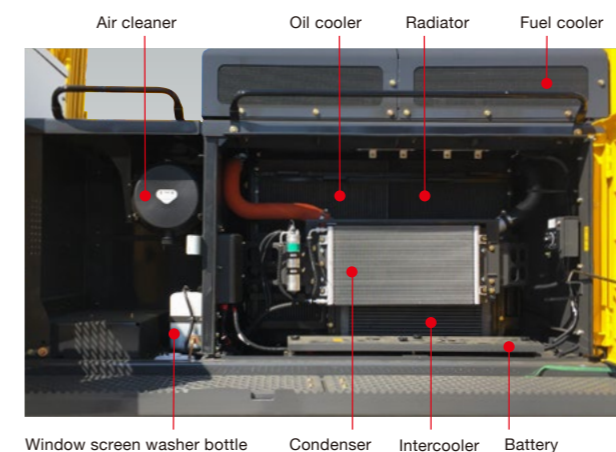
SPACE 5a clean engine technology

SPACE 5a engine technology optimizes fuel efficiency and environmental performance via the advanced common rail fuel injection system, cooled EGR system, and variable-geometry turbochargers. New SCR (Selective Catalytic Reduction) system provides clean exhaust gas by removing emissions. This is achieved by injecting AdBlue® into the exhaust gas to cause a chemical reaction to meet the EPA's Final Tier 4 guidelines without DPF.

*AdBlue® is a registered trademark of the Verband der Automobilindustrie e. V. (VDA).

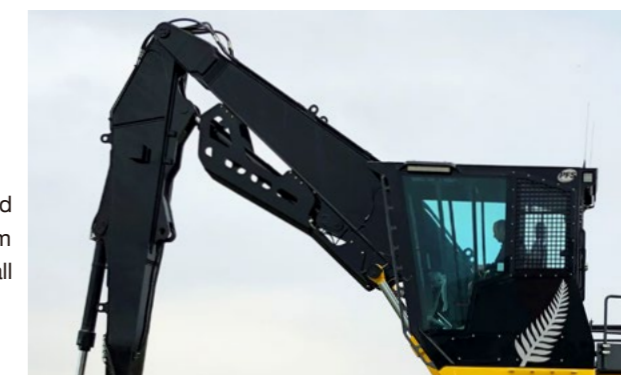
Minimal maintenance, fire prevention

Tough, field-repairable parts include 3 pieces steel engine hood and no-bolt oil filler. All service ports can be accessed via hand-turn knobs, with no tools needed. Larger rear-mounted fuel tank and one of the largest AdBlue tank capacities will help to reduce downtime. New debris screens for fire prevention and easy maintenance with flat shape and optional reversible fan could save your time and effort for cleaning. Holes on the side panels are installed and this allows you to insert a fire extinguisher to put out a fire.



High and wide undercarriage / Straight arm and boom designated for forestry work

The structure of purpose-built high and wide undercarriage has been improved with sturdy x-pattern carbody, full-length track guards (2 pieces, bolt-on type) and more features. New step and scraper are designed for easier cleaning. Straight arm and boom which have wider working range and larger lifting capacity are all factory-fabricated attachment and have optimized shape and materials which reduce stress concentration on specific areas such as arm foot, boom foot and frame.



Heavy duty components for tough work

Not only specific attachment and undercarriage but also other components are completely built for forestry work. Platform, boom foot and revolving frame are redesigned and reinforced. Various protective guards such as arm and boom cylinder guards, and side guards work for your job. Refined engine food and exhaust guard have good access to regular maintenance areas with ease.

Technical Specification

Model	SH210LF-6	SH250LF-6	SH300LF-6	3240TLN	3740TLW	4040TLW	4640TLW	5040TLW
Engine								
Manufacturer	ISUZU	ISUZU	ISUZU	ISUZU	ISUZU	ISUZU	ISUZU	ISUZU
Model	GI-4HK1X	GI-4HK1X	GH-6HK1X	AR-4HK1X	AQ-4HK1X	AQ-6HK1X	AQ-6HK1X	AQ-6HK1X
Type	Water-cooled, 4-cycle diesel, 4-cylinder in line, High pressure common rail system (electric control), Turbocharger with air cooled intercooler	Water-cooled, 4-cycle diesel, 4-cylinder in line, High pressure common rail system (electric control), Turbocharger with air cooled intercooler	Water-cooled, 4-cycle diesel, 6-cylinder in line, High pressure common rail system (electric control), Turbocharger with air cooled intercooler	Water-cooled, 4-cycle diesel, 4-cylinder in line, High pressure common rail system (electric control), Turbocharger with air cooled intercooler, SCR system	Water-cooled, 4-cycle diesel, 4-cylinder in line, High pressure common rail system (electric control), Turbocharger with air cooled intercooler, SCR system	Water-cooled, 4-cycle diesel, 6-cylinder in line, High pressure common rail system (electric control), Turbocharger with air cooled intercooler, SCR system	Water-cooled, 4-cycle diesel, 6-cylinder in line, High pressure common rail system (electric control), Turbocharger with air cooled intercooler, SCR system	Water-cooled, 4-cycle diesel, 6-cylinder in line, High pressure common rail system (electric control), Turbocharger with air cooled intercooler, SCR system
Rated output (ISO 9249)	117.3 kW at 1800 min ⁻¹	132.1 kW at 2000 min ⁻¹	202.0 kW at 2000 min ⁻¹	119.3 kW at 1800 min ⁻¹	132.1 kW at 2000 min ⁻¹	154 kW at 1800 min ⁻¹	200 kW at 1900 min ⁻¹	200 kW at 1900 min ⁻¹
Maximum torque (ISO 9249)	608 N-m at 1600 min ⁻¹	622 N-m at 1500 min ⁻¹	989 N-m at 1500 min ⁻¹	620 N-m at 1600 min ⁻¹	621 N-m at 1800 min ⁻¹	849 N-m at 1500 min ⁻¹	988 N-m at 1500 min ⁻¹	988 N-m at 1500 min ⁻¹
Piston displacement	5.19ltr (5193 cc)	5.19ltr (5193 cc)	7.79 ltr (7790cc)	5.19 ltr (5193cc)	5.19 ltr (5193cc)	7.79 ltr (7790cc)	7.79 ltr (7790cc)	7.79 ltr (7790cc)
Bore and stroke	115 mm x 125 mm	115 mm x 125 mm	115 mm x 125 mm	115 mm x 125 mm	115 mm x 125 mm	115 mm x 125 mm	115 mm x 125 mm	115 mm x 125 mm
Starting system	24 V electric motor starting	24 V electric motor starting	24 V electric motor starting	24 V electric motor starting	24 V electric motor starting	24 V electric motor starting	24 V electric motor starting	24 V electric motor starting
Alternator	24V, 50 A	24V, 50 A	24V, 50 A	24V, 85 A	24V, 85 A	24V, 90 A	24V, 90 A	24V, 90 A

Hydraulic pumps

Maximum oil flow	2 x 211 ltr/min	2 x 234 ltr/min	2 x 257 ltr/min	2 x 211 ltr/min	2 x 234 ltr/min	2 x 243 ltr/min	2 x 300 ltr/min	2 x 300 ltr/min
Pilot pump max.oil flow	18 ltr/min	20 ltr/min	28.5 ltr/min	18 ltr/min	20 ltr/min	27 ltr/min	28.5 ltr/min	28.5 ltr/min

Working circuit pressure

Boom/Arm/Bucket	34.3 Mpa	34.3 Mpa	34.3 Mpa	34.3 MPa	34.3 Mpa	34.3 Mpa	34.3 Mpa	34.3 Mpa
Boom/Arm/Bucket with auto power up	36.8 Mpa	36.8 Mpa	37.3 Mpa	-	-	-	-	-
Swing circuit	29.4 Mpa	28.9 Mpa	30.4 Mpa	28.9 Mpa	30.4 Mpa	30.4 Mpa	29.4 Mpa	29.4 Mpa
Travel circuit	34.3 Mpa	34.3 Mpa	34.3 Mpa	34.3 Mpa	34.3 Mpa	34.3 Mpa	34.3 MPa	34.3 MPa

Hydraulic cylinders

Cylinder size	Boom	120 - 85 - 1255 mm	130 - 90 - 1335 mm	140 - 95 - 1369 mm	135 - 95 - 1143 mm	150 - 105 - 1210 mm	150 - 105 - 1210 mm	170 - 115 - 1342 mm	170 - 115 - 1342 mm
(Bore-Rod-Stroke)	Arm	140 - 100 - 1460 mm	145 - 105 - 1660 mm	150 - 105 - 1569 mm	150 - 105 - 1438 mm	170 - 120 - 1350 mm	170 - 115 - 1715 mm	190 - 130 - 1643 mm	190 - 130 - 1643 mm
	Bucket (Heel)	120 - 85 - 1010 mm	130 - 90 - 1070 mm	135 - 90 - 1078 mm	115 - 80 - 1012 mm	130 - 90 - 1073 mm	130 - 90 - 1073 mm	150 - 105 - 1140 mm	150 - 105 - 1140 mm

Swing

Maximum swing speed	11.5 min ⁻¹	11.0 min ⁻¹	11.0 min ⁻¹	10.5 min ⁻¹	9.0 min ⁻¹	8.5 min ⁻¹	7.6 min ⁻¹	7.6 min ⁻¹
Tail Swing Radius	2750 mm	2950 mm	3160 mm	3200 mm	3250 mm	3510 mm	3740 mm	3740 mm
Swing Torque	64 kN-m	74.9 kN-m	92.1 kN-m	74.9 kN-m	104.0 kN-m	112 kN-m	150 kN-m	150 kN-m

Undercarriage

No. of Upper rollers	2	2	2	2	2	2	2	2
No. of Lower rollers	9	8	8	8	8	8	9	9
No. of Track shoes	51	47	48	48	47	48	50	50
Link Pitch	190	216	216	203	216	216	216	228.6
Shoe type	700 mm double grouser shoe	700 mm double grouser shoe	700 mm double grouser shoe	700 mm double grouser shoe	700 mm double grouser shoe	700 mm double grouser shoe	700 mm double grouser shoe	700 mm double grouser shoe

Travel system

Travel speeds (High/Low)	5.0 / 3.2 km/h	4.4 / 2.6 km/h	4.8 / 2.9 km/h	4.7 / 2.7 km/h	4.4 / 2.6 km/h	4.0 / 2.4 km/h	5.0 / 3.0 km/h	4.5 / 2.7 km/h
Drawbar Pull	201kN	262 kN	260 kN	230 kN	258 kN	309 kN	306 kN	339 kN

Lubricant & coolant capacity

Hydraulic system	240 liter	250 liter	300 liter	250 liter	250 liter	300 liter	350 liter	350 liter
Hydraulic sump tank	147 liter	147 liter	147 liter	147 liter	147 liter	147 liter	175 liter	175 liter
Fuel tank	410 liter	410 liter	450 liter	820 liter	820 liter	820 liter	820 liter	820 liter
Cooling system	30.0 liter	30.2 liter	32.7 liter	31.4 liter	31.4 liter	35.9 liter	38.0 liter	38.0 liter
Final drive case (per side)	5.0 liter	8.0 liter	8.0 liter	9.5 liter	8.0 liter	9.5 liter	10.0 liter	15 liter
Swing drive case	5.0 liter	9.7 liter	7.9 liter	9.7 liter	4.2 liter	5.0 liter	10.5 liter	10.5 liter
Engine crank case (With Remote Oil Filter)	23.1 liter	23.1 liter	41.0 liter	23.1 liter	23.1 liter	40.9 liter	48.0 liter	48.0 liter
Urea water tank	-	-	-	120 liter	120 liter	120 liter	152 liter	152 liter

Weight *with factory spec

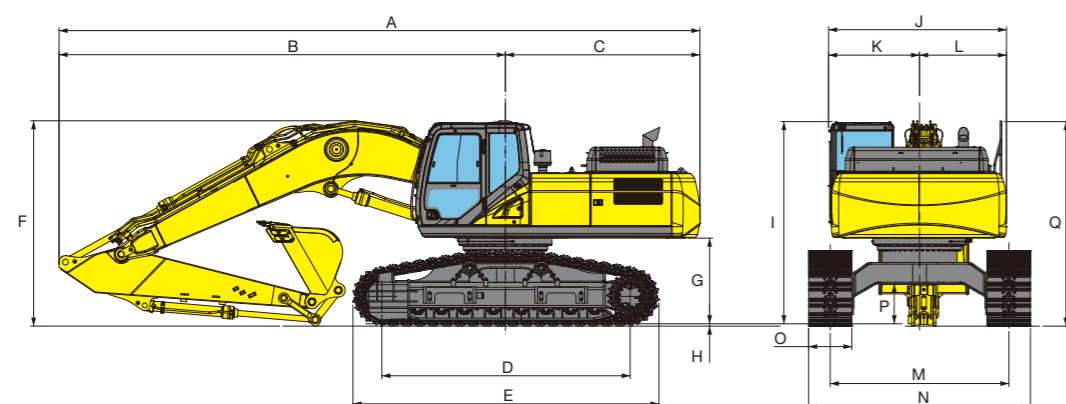
Operating Weight	24300 kg (w/ 0.9m ³ SCM bucket)	31000 kg (w/ 1.1m ³ SCM bucket)	33500 kg (w/ 1.3m ³ SCM bucket)	32500 kg (Without Cabin)	37200 kg (Without Cabin)	40500 kg (Without Cabin)	46100 kg (Without Cabin)	49700 kg (Without Cabin)
------------------	---	---	---	-----------------------------	-----------------------------	-----------------------------	-----------------------------	-----------------------------

Digging Force

Arm digging force	103 kN	120 kN	122 kN	-	-	-	-	-
With auto power up	110 kN	129 kN	132 kN	-	-	-	-	-
Bucket digging force	142 kN	162 kN	175 kN	-	-	-	-	-
With auto power up	152 kN	174 kN	190 kN	-	-	-	-	-

Working Range & Dimensions

LF-6 series

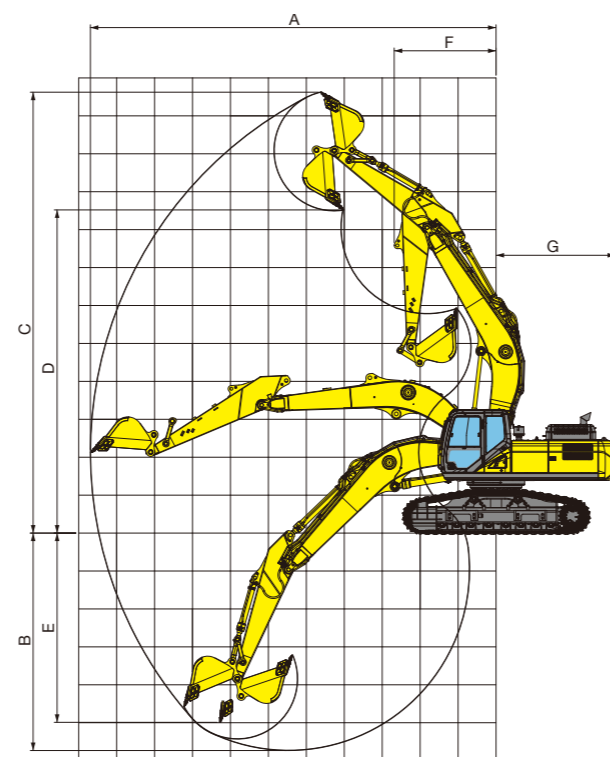


Dimensions

Model	SH210LF-6	SH250LF-6	SH300LF-6
A Overall length	9 320 mm	9 820 mm	10 380 mm
B Length from centre of machine (to arm top)	6 600 mm	6 880 mm	7 230 mm
C Length from centre of machine (to rear end)	2 720 mm	2 940 mm	3 150 mm
D Wheel base (Center to center of wheels)	3 820 mm	3 910 mm	4 020 mm
E Crawler overall length	4 650 mm	4 870 mm	4 960 mm
F Overall height (to top of boom)	3 070 mm	3 200 mm	3 330 mm
G Clearance height under upperstructure	1 290 mm	1 340 mm	1 370 mm
H Shoe lug height	35 mm	38.1 mm	38.1 mm
I Cab height	3 210 mm	3 280 mm	3 310 mm
J Upperstructure overall width	2 790 mm	2 770 mm	2 870 mm
K Width from centre of machine (left side)	1 450 mm	1 430 mm	1 460 mm
L Width from centre of machine (right side)	1 340 mm	1 340 mm	1 410 mm
M Trackgauge	2 800 mm	2 890 mm	2 890 mm
N Undercarriage overall width (with 700 shoes)	3 500 mm	3 590 mm	3 590 mm
O Std. shoe width	700 mm	700 mm	700 mm
P Minimum ground clearance	670 mm	650 mm	650 mm
Q Overall height (to top of guardrail)	3 220 mm	3 290 mm	3 320 mm

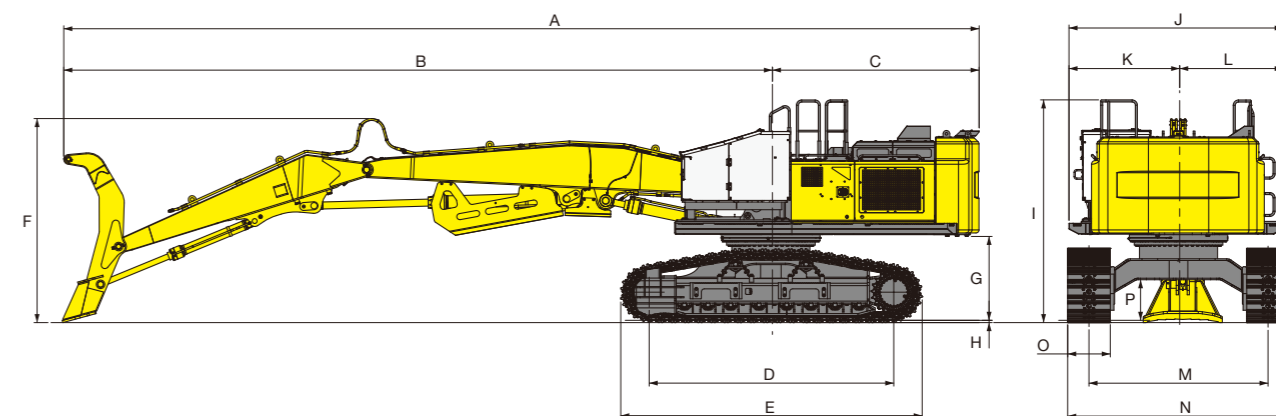
Working Range

Model	SH210LF-6	SH250LF-6	SH300LF-6
Maximum reach at GRP	9 690 mm	10 050 mm	10 450 mm
A Max. reach	9 910 mm	10 280 mm	10 670 mm
B Max. digging depth	5 280 mm	5 250 mm	5 710 mm
C Max. digging height	11 090 mm	11 600 mm	11 610 mm
D Max. dumping height	8 180 mm	8 470 mm	8 510 mm
E Max. vertical wall cut depth	4 460 mm	4 530 mm	5 000 mm
F Minimum front swing radius	2 330 mm	2 410 mm	2 700 mm
G Tail swing radius	2 750 mm	2 950 mm	3 160 mm



40 series

*Operator cabin of the images will be different from actual machines.



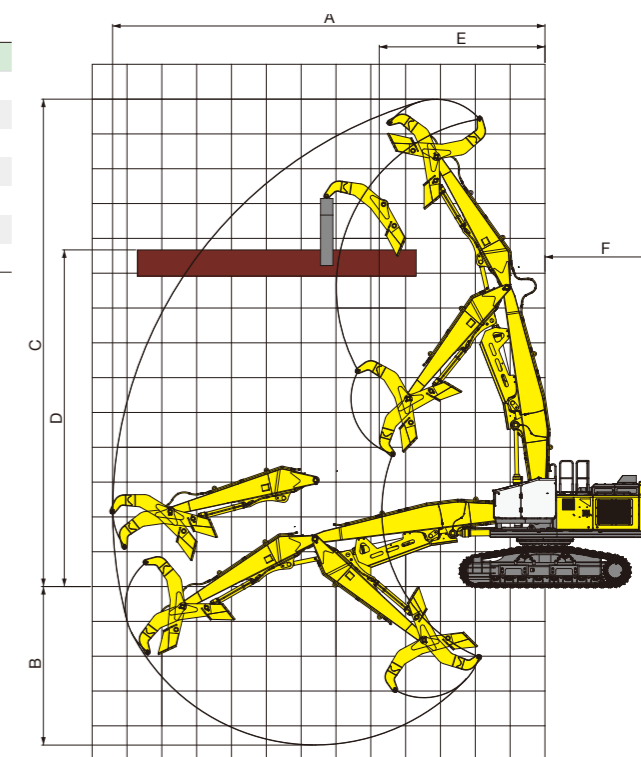
Dimensions

Model	3240TLN	3740TLW	4040TLW	4640TLW	5040TLW
A Overall length	13 470 mm	14 100 mm	15 130 mm	16 560 mm	16 550 mm
B Length from centre of machine (to arm top)	10 400 mm	10 980 mm	11 710 mm	12 890 mm	12 880 mm
C Length from centre of machine (to rear end)	3 070 mm	3 120 mm	3 420 mm	3 670 mm	3 670 mm
D Wheel base (Center to center of wheels)	3 750 mm	3 910 mm	4 020 mm	4 230 mm	4 370 mm
E Crawler overall length	4 650 mm	4 890 mm	5 000 mm	5 180 mm	5 450 mm
F Overall height (to top of boom)	3 010 mm	3 510 mm	3 340 mm	3 630 mm	3 640 mm
G Clearance height under upperstructure	1 330 mm	1 350 mm	1 390 mm	1 450 mm	1 470 mm
H Shoe lug height	42.5 mm	38.1 mm	38.1 mm	38.1 mm	48 mm
I Overall height (to top of guardrail)	3 620 mm	3 640 mm	3 640 mm	3 710 mm	3 740 mm
J Upperstructure overall width	3 420 mm	3 370 mm	3 470 mm	3 640 mm	3 640 mm
K Width from centre of machine (left side)	1 770 mm	1 720 mm	1 750 mm	1 840 mm	1 840 mm
L Width from centre of machine (right side)	1 650 mm	1 650 mm	1 720 mm	1 800 mm	1 800 mm
M Trackgauge	2 800 mm	2 890 mm	2 890 mm	2 890 mm	2 890 mm
N Undercarriage overall width (with 700 shoes)	3 500 mm	3 590 mm	3 590 mm	3 590 mm	3 590 mm
O Std. shoe width	700 mm	700 mm	700 mm	700 mm	700 mm
P Minimum ground clearance	650 mm	650 mm	645 mm	700 mm	720 mm

Working Range

Model	3240TLN	3740TLW	4040TLW
Maximum reach at GRP	10 890 mm	11 470 mm	12 230 mm
A Max. reach	11 100 mm	11 680 mm	12 410 mm
B Max. depth	3 740 mm	4 000 mm	4 570 mm
C Max. height	13 010 mm	13 460 mm	13 980 mm
D Max. log level height	9 040 mm	9 140 mm	9 440 mm
E Min. front swing radius	3 440 mm	4 230 mm	4 760 mm
F Tail swing radius	3 200 mm	3 250 mm	3 510 mm

Model	4640TLW	5040TLW
Maximum reach at GRP	13 410 mm	13 400 mm
A Max. reach	13 610 mm	13 610 mm
B Max. depth	4 710 mm	4 690 mm
C Max. height	15 440 mm	15 450 mm
D Max. log level height	10 490 mm	10 500 mm
E Min. front swing radius	5 010 mm	5 010 mm
F Tail swing radius	3 740 mm	3 740 mm



Lifting Capacity

- Notes: 1. Weight of all lifting accessories must be deducted from the lifting capacities below.
 Lifting capacities for Log Loader attachment include heel rack, but not grapple.
 Addition of grapple weight must be deducted from lift capacities.
 2. Ratings are based on ISO 10567
 3. Lifting capacity does not exceed 75% of tipping load with the machine on firm, level ground or 87% full hydraulic capacity.
 4. Operator should be fully acquainted with the Operator's Manuals furnished by Sumitomo Construction Machinery & Dealer before operating the machine.
 5. Capacities are for the reference and actual capacities will depend on local modification and will be varied accordingly.



4640TLW SHOE : 700 (mm)DG ARM LENGTH : 4.98 (m) BOOM : 7.06 (m) MAXIMUM REACH : 13.61 (m) Live Heel : with Live Heel Unit : m,kg

Bucket Hook Height	Radius of Load																						
	Max. Radius		13.5 m		12.0 m		10.5 m		9.0 m		7.5 m		6.0 m		4.5 m		3.0 m		Min. Radius				
	(kg)	(m)	(kg)	(m)	(kg)	(m)	(kg)	(m)	(kg)	(m)	(kg)	(m)	(kg)	(m)	(kg)	(m)	(kg)	(m)	(kg)	(m)			
15.0 m																14 059*	14 059*			12 244*	5.81	12 244*	5.81
13.5 m	9 775*	7.18	9 775*	7.18							9 807*	9 807*	11 989*	11 989*						11 886*	6.73	11 886*	6.73
12.0 m	8 255*	9.13	8 190	9.13					8 648	8 158	11 184*	11 184*			8 523*	8 523*				11 718*	7.19	11 718*	7.19
10.5 m	7 494*	10.51	6 471	10.51			7 531	6 178	10 409	8 325	11 377*	11 377*								11 535*	7.29	11 535*	7.29
9.0 m	7 034*	11.54	5 481	11.54			8 994	6 268	10 301	8 283	11 299*	11 299*								12 004*	7.03	12 004*	7.03
7.5 m	6 822*	12.29	4 868	12.29		7 038	4 809	8 951	6 228	10 422	8 236	11 513*	11 293	10 545*	10 545*					11 865*	6.38	11 865*	6.38
6.0 m	6 500	12.83	4 462	12.83		6 996	4 769	8 909	6 188	10 715	8 175	11 614*	11 138	8 523*	8 523*					10 669*	5.16	10 669*	5.16
4.5 m	6 171	13.17	4 208	13.17		6 955	4 731	8 848	6 131	11 101	8 021	12 659*	10 840	8 909*	8 909*					15 170*	15 170		
3.0 m	5 989	13.34	4 064	13.34	5 837	3 944	6 942	4 719	8 738	6 028	11 256	7 810	13 626*	10 448	13 031*	13 031*				14 619*	4.42	14 619*	4.42
1.5 m	5 948	13.33	4 023	13.33	5 321*	3 933	6 905	4 683	8 614	5 911	11 013	7 585	14 160*	10 041	17 901*	14 109				16 155*	2.86	16 155*	2.86
0 m	5 436*	13.15	4 078	13.15			5 968*	4 658	8 496	5 802	10 733	7 326	14 138*	9 583	18 185*	13 269	15 170*	15 170		18 680*	8 680*		
-1.5 m	4 773*	12.75	4 259	12.75			5 235*	4 646	7 470*	5 664	10 041*	7 097	12 844*	9 222	16 399*	12 704	8 680*	8 680*		4 045*	4 045*	6 155*	2.86
-3.0 m	5 422*	11.49	4 933	11.49					6 286*	5 597	7 966*	6 965	10 525*	9 015	13 294*	12 414	6 721*	6 721*	4 045*	6 155*	2.86	6 155*	2.86
-4.5 m	7 852*	8.45	7 581	8.45									9 283*	8 963	11 707*	11 707*				11 878*	5.90	11 878*	5.90

5040TLW SHOE : 700 (mm)DG ARM LENGTH : 4.98 (m) BOOM : 7.06 (m) MAXIMUM REACH : 13.61 (m) Live Heel : with Live Heel Unit : m,kg

Bucket Hook Height	Radius of Load																						
	Max. Radius		13.5 m		12.0 m		10.5 m		9.0 m		7.5 m		6.0 m		4.5 m		3.0 m		Min. Radius				
	(kg)	(m)	(kg)	(m)	(kg)	(m)	(kg)	(m)	(kg)	(m)	(kg)	(m)	(kg)	(m)	(kg)	(m)	(kg)	(m)	(kg)	(m)			
15.0 m																13 952*	13 952*			12 239*	5.82	12 239*	5.82
13.5 m	9 758*	7.20	9 758*	7.20								9 743*	9 743*	11 999*	11 999*					11 881*	6.74	11 881*	6.74
12.0 m	8 227*	9.15	8 227*	9.15					8 679*	8 679*	11 192*	11 192*								11 708*	7.20	11 708*	7.20
10.5 m	7 491*	10.52	7 007	10.52			7 564*	6 731	10 407*	8 986	11 375*	11 375*								11 536*	7.29	11 536*	7.29
9.0 m	7 022*	11.55	5 962	11.55			9 394*	6 818	10 302*	8 942	11 300*	11 300*								12 008*	7.03	12 008*	7.03
7.5 m	6 800*	12.30	5 315	12.30		7 944	5 281	9 411*	6 776	10 424*	8 894	11 512*	11 512*	10 530*	10 530*					11 859*	6.37	11 859*	6.37
6.0 m	6 721*	12.83	4 896	12.83		7 900	5 239	9 530*	6 735	10 719*	8 832	11 618*	11 618*	8 516*	8 516*					10 631*	5.14	10 631*	5.14
4.5 m	6 743*	13.17	4 630	13.17		7 858	5 200	9 677*	6 678	11 104*	8 678	12 675*	11 660	8 919*	8 919*					15 370*	4.95	15 370*	4.95
3.0 m	6 601*	13.34	4 479	13.34	6 013*	4 355	7 689*	5 187	9 750*	6 575	11 458*	8 466	13 632*	11 268	13 087*	13 087*				14 360*	4.41	14 360*	4.41
1.5 m	6 060*	13.33	4 439	13.33	5 311*	4 344	7 120*	5 152	9 474*	6 458	11 634*	8 241	14 163*	10 862	17 908*	15 202				4 770*	3.15	4 770*	3.15
0 m	5 424*	13.15	4 500	13.15			5 954*	5 127	8 785*	6 348	11 210*	7 982	14 130*	10 403	18 183*	14 365	15 121*	15 121		6 761*	6 761*	4 070*	4 070*
-1.5 m	4 782*	12.74	4 702	12.74			5 216*	5 115	7 454*	6 211	10 027*	7 754	12 829*	10 043	16 377*	13 802	8 690*	8 690*		4 070*	4 070*	6 223*	2.88
-3.0 m	5 440*	11.47	5 439	11.47					6 264*	6 145	7 943*	7 622	10 500*	9 838	13 261*	13 261*	6 761*	6 761*	4 070*	6 223*	2.88	6 223*	2.88
-4.5 m	7 930*	8.38	7 930*	8.38								9 254*	9 254*	11 670*	11 670*					11 721*	5.97	11 721*	5.97

Standard Equipment & Accessories

LF-6 series

[Cab]

- Shock-less cab suspension by 4-point fluid mounts
- Built-in type full-colour monitor display
- Tilting console
- Open air introducing pressurised full-automatic air conditioner
- Defroster
- Hot & cool box
- Cup holder
- Clock
- Magazine rack
- Accessory case
- Floor mat
- Armrest & headrest
- Ashtray & cigarette lighter
- Cab light (Auto-OFF function)
- Coat hook
- Sumitomo remote monitoring system : G@Nav

[Hydraulic system]

- SIH:S+ hydraulic system
- Operation mode (SP, H and A mode)
- Automatic 2-speed travel
- Automatic power boost
- Arm/boom/bucket reactivation circuit
- Automatic swing parking system
- High-performance return filter

[Attachment]

- HD boom cylinder guard
- Arm cylinder guards

[Option]

- Rear View Camera
- Side View Camera
- FVM (Field View Monitor)

[Others]

- Auto/one-touch idling
- Auto idle shutdown system
- EMS
- Long-life hydraulic oil
- Fuel filter (with water separator)
- Fuel prefilter (with water separator)
- Double-element air cleaner
- Grease-enclosed track link
- Large tool box
- A set of tools

[Safety equipment]

- Rearview mirror (left/right)
- Retracting seat belt
- Gate lock lever
- Travel alarm (with on and off switch)
- Anti-theft alarm system
- Engine room firewall
- Fan guard
- Engine emergency stop switch
- Engine neutral start



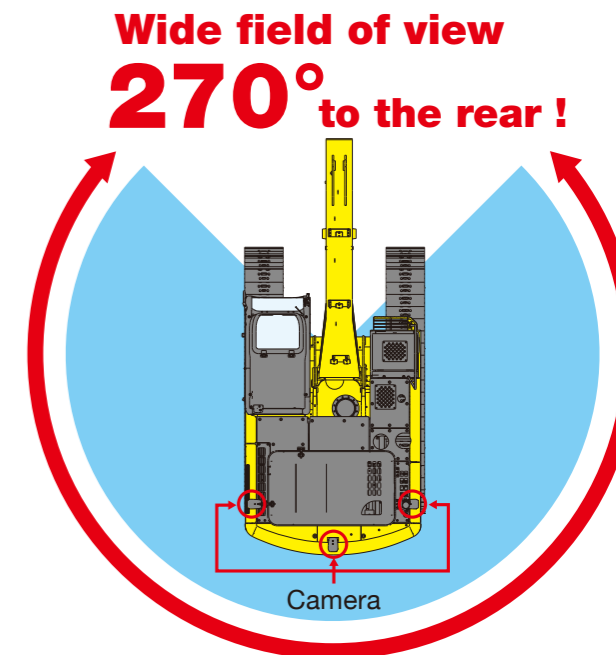
The FVM displays a top-down view around to 270° to the rear, making it easy to check for other personnel or vehicles on the worksite, all from the operator's seat.



FVM screen (daytime)



FVM screen (night time)



40 series

[Cab]

- SCM air-suspension heated seat, sliding/reclining, adjustable armrests, lumbar support, retractable seat belt, +/- 5 degree tilt
- High definition LCD monitor w/ full color 7" display
- Single pedal travel
- Travel alarm with cancellation switch
- Sumitomo remote monitoring system : G@Nav

[Hydraulic system]

- SIH:Sa hydraulic system
- Operation mode (SP, H and A mode)
- Auto swing priority
- Auxiliary hydraulics for open/close/rotate
- Two-speed with auto shift & straight travel
- Boom regeneration
- Boom and arm holding valves
- Centralized lube banks

[Undercarriage]

- Sealed and lubricated track chain
- Forestry-style upper roller brackets w/ scrapers
- Planetary drive
- Spring-applied, hydraulic release brake
- 27.5" (700 mm) 2-bar grouser
- Full-length track guards (2 piece, bolt-on)
- HD purpose-built swivel guard belly pan
- HD purpose-built upper belly pans
- HD purpose-built reinforced frame (upper & lower)
- HD purpose-built travel motor covers

[Upperstructure]

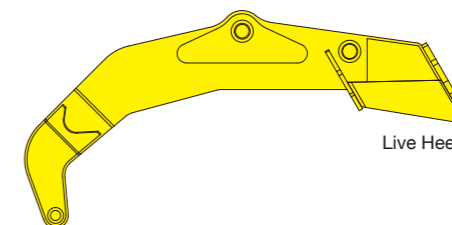
- Rear mounted fuel tank
- HD purpose-built pump & radiator doors
- HD purpose-built tank skin
- HD purpose-built full length catwalks w/ non-skid edge treatment- welded
- HD purpose-built turntable bearing & swing motor
- Non-skid surface pads
- Large RH storage box

[Attachment]

- HD boom cylinder guard
- Arm cylinder guards

[Option]

- Live Heel
- Hydraulic reversible fan
- *Only for 3240/3740/4040.



Live Heel