

# LOGGERS

865 | 875E | 880E | 890



PURPOSE-BUILT FOR EFFICIENCY, PRODUCTIVITY, SAFETY, AND OPERATOR COMFORT.

**Tigercat**<sup>®</sup>  
Tough • Reliable • Productive

## THE LOGGER LINE-UP

### 865

The 865 is a highly versatile forestry carrier. The 865 has multiple loader configurations with boom options to accommodate various grapple styles with or without a live heel. In addition, the machine can be configured for roadside processing.



### 875E

The 875E logger can be configured for loading or processing. The machine can be equipped as a loader with various power clam, butt-n-top, pulpwood, live heel and log grapple options. As a processor, the 875E is capable of running large harvesting heads in demanding roadside processing duty cycles.



### 880E

The 880E is a multi-purpose carrier. It can be configured as a loader with various power clam and butt-n-top grapple options. Equipped with a live heel boom system, the 880E is a highly capable shovel logger. It can also be configured as a high capacity processor.



### 890

The 890 logger is a purpose-built forestry swing machine – the largest in the Tigercat range, and a true west coast swing machine. The 890 can be configured as a loader, a shovel logger or a high capacity processor.



## TELEMATICS SOLUTIONS

REDUCE DOWNTIME AND TROUBLE  
SHOOT ISSUES FASTER AND SMARTER.



**Tigercat telematics provides real-time data and machine diagnostics for fleet management and machine monitoring.**

Just some of the many features:

- ▶ Upload and overlay custom maps with cut block and boundary information
- ▶ Communicate directly with the machine operator through text messages
- ▶ Get a quick summary of daily activities (production, refueling, idling, shutdown)
- ▶ View detailed information about any fault codes reported
- ▶ Get direct support at the jobsite from your Tigercat dealer
- ▶ Use estimated work time remaining to schedule refuelling
- ▶ Identify potential maintenance requirements
- ▶ Report production metrics between operators and machines





## OPERATOR'S STATION



### SPACIOUS, REAR ENTRY CAB

**The rear entry cab is large, comfortable and easy to access.**

**The operator is positioned up high with a commanding view of the work area with excellent sightlines in all directions.**

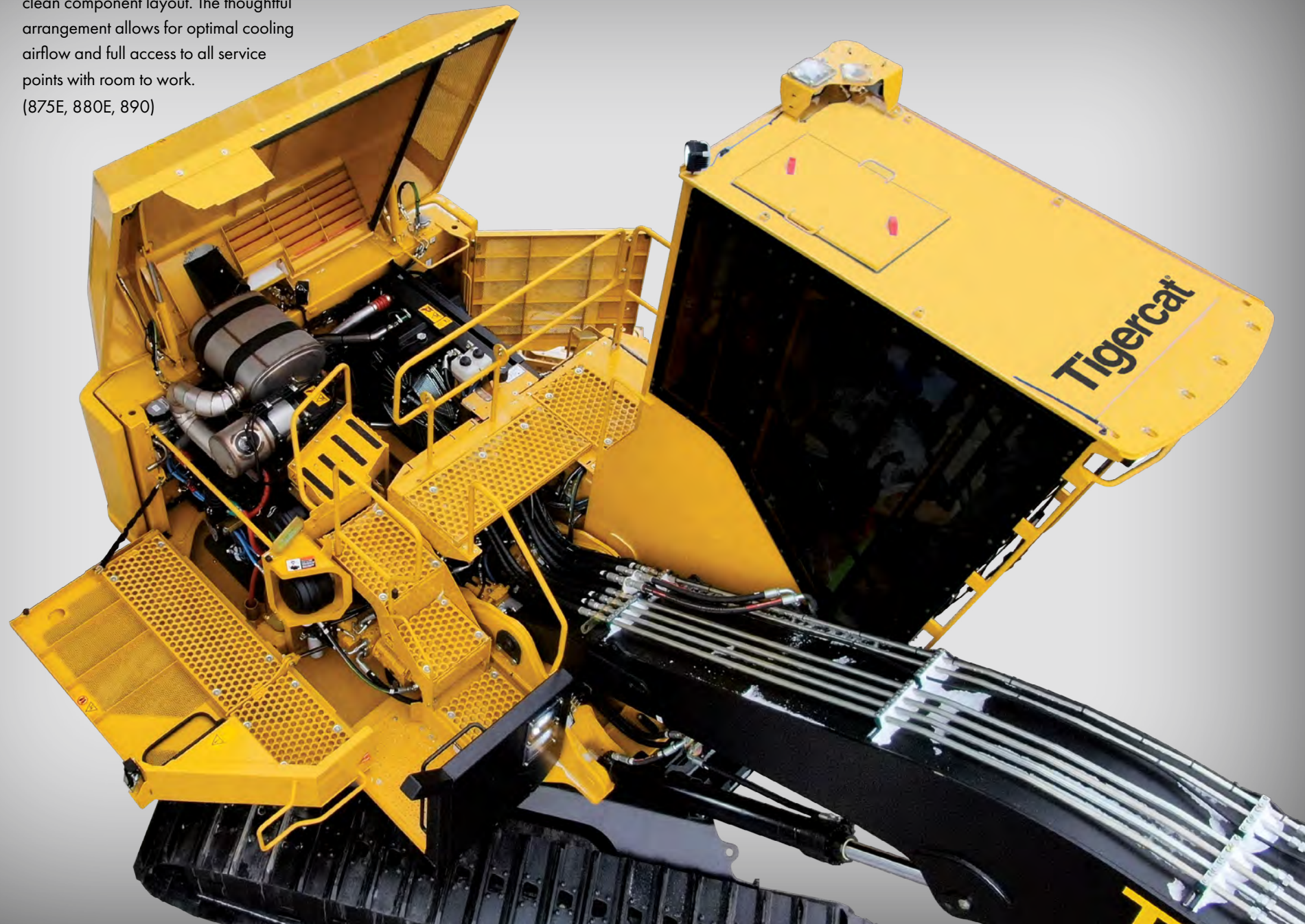
#### **For the operator**

- ▶ Hooked boom geometry and forward cab positioning provides unmatched right side visibility
- ▶ Full-length front window and additional floor windows provide clear view to the track tips
- ▶ Wider, fully adjustable air ride seat with integrated heating and ventilation
- ▶ Slide-up adjustable armrests for added comfort
- ▶ Reclining seat with adjustable lumbar support
- ▶ Comfortable four-point harness for improved safety
- ▶ Optimally positioned controls
- ▶ Large touchscreen display for machine monitoring and function adjustment
- ▶ Auxiliary input port, Bluetooth® audio, hands-free calling, and Sirius ready (North America only)
- ▶ rearVIEW camera equipped
- ▶ Anti-slip steps with railing all the way up for safe walk-up access, even in winter conditions
- ▶ Key fob to remotely turn on interior and exterior cab lights (875E and 880E only)



## SERVICE ACCESS

- ▶ A power operated roof enclosure opens to a neat, clean component layout. The thoughtful arrangement allows for optimal cooling airflow and full access to all service points with room to work. (875E, 880E, 890)



- ▶ A large side enclosure door with service platform provides easy access to hydraulic components and filters. (865)



- ▶ A rear door through the counterweight provides full access to the back of the engine. (865)

ROOM TO BREATHE AND ROOM TO WORK





# FROM TOP TO BOTTOM

## ENGINE, BOOM SYSTEM AND UNDERCARRIAGE

**Tigercat's efficient hydraulic systems enhance overall performance and productivity.**

- ▶ Closed loop swing drive feeds power back to the engine when swing decelerates, reducing fuel consumption and recovering energy for other machine functions (875E, 880E, 890 only).



**TIGERCATPOWER.**  
**TIGERCATSUPPORT.**

### TIGERCAT FPT ENGINE TECHNOLOGY

Tigercat FPT engines offer quick load response, low operating costs and high power density, combined with excellent fuel economy.

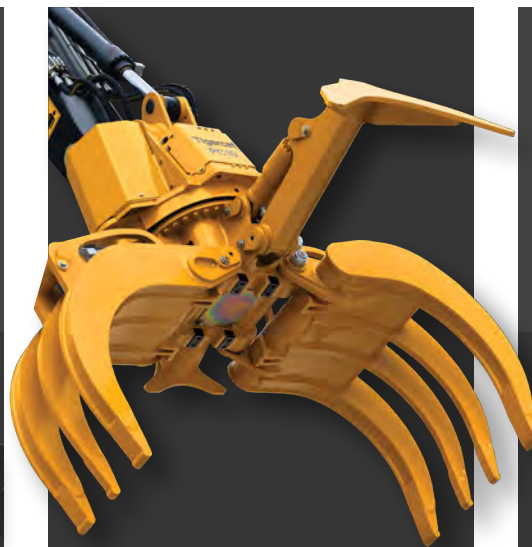
The Tigercat FPT engine series is fully supported by Tigercat, including all parts, service, warranty and technical support.

Stable base of operations. Tigercat logger undercarriages have long track frames and a wide stance for high stability and operator comfort when lifting heavy loads and working at extended reach.



**ROBUST, FOREST DUTY UNDERCARRIAGE**

The log grapple configuration is available with or without a live heel.



Variety of grapple styles including pulpwood, power clam (PC08/PC10/PC12) and butt-n-top grapples (BT08).

The processing configuration can accommodate the following attachment weights:

- ▶ 865 = 3 400 kg (7,500 lb)
- ▶ 875E = 3 700 kg (8,150 lb)
- ▶ 880E = 4 390 kg (9,650 lb)
- ▶ 890 = 4 910 kg (10,800 lb)





## MULTI-PURPOSE

LOADING | SHOVEL LOGGING | PROCESSING

**Durable swing machines for the deck or the cut block.  
Purpose-built to eliminate the design compromises  
found in excavator conversions.**





# GET TO KNOW THEM

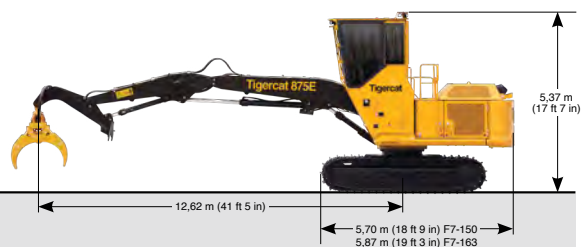


**865**



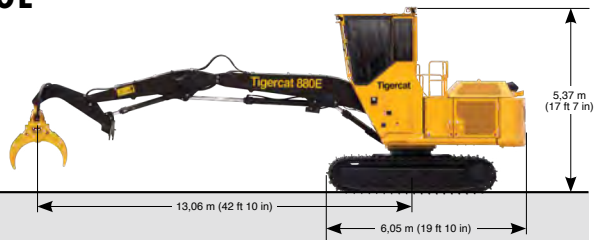
Scan the QR code then click 'SPECS' for a full list of machine specifications for the 865 logger.

**875E**



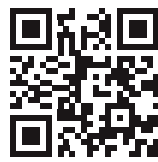
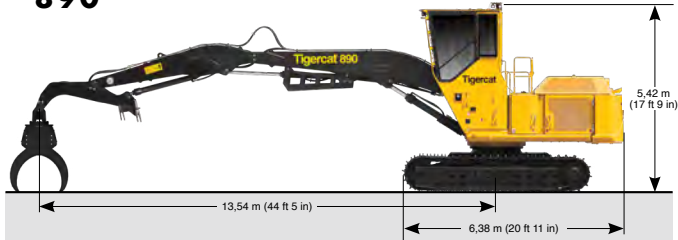
Scan the QR code then click 'SPECS' for a full list of machine specifications for the 875E logger.

**880E**



Scan the QR code then click 'SPECS' for a full list of machine specifications for the 880E logger.

**890**



Scan the QR code then click 'SPECS' for a full list of machine specifications for the 890 logger.

**Download the Tigercat App to access the most current machine specifications for all Tigercat machine models.**

|                |   |
|----------------|---|
| <b>EMAIL</b>   | comments@tigercat.com                                   |
| <b>PHONE</b>   | 519.753.2000  |
| <b>WEBSITE</b> | www.tigercat.com  |
| <b>ADDRESS</b> | 54 Morton Ave. East, Brantford, Ontario Canada, N3R 7J7 |
| <b>MAIL</b>    | Box 637 N3T 5P9   |

© 2001 - 2022 Tigercat International Inc. All Rights Reserved. TIGERCAT, WIDERANGE, TURNAROUND, ER, EHS, LOW-WIDE, TEC, REMOTELOG, and their respective logos, TOUGH RELIABLE PRODUCTIVE, TIGERCAT TV, "Tigercat Orange" and BETWEEN THE BRANCHES, as well as corporate and product identity, are trademarks of Tigercat International Inc., and may not be used without permission. TIGERCAT, TURNAROUND, WIDERANGE, EHS, LOW-WIDE, ER and REMOTELOG, and their respective logos are registered trademarks of Tigercat International Inc.